



Promote and enable the safe, effective use of powered access worldwide

# IPAF MEWP OPERATOR TRAINING COURSE



[www.ipaf.org/training](http://www.ipaf.org/training)



## BOOK YOUR PLACE

- ➔ To book this course, contact your nearest IPAF Approved Training Centre
- ➔ Use our training centre locator at: [www.ipaf.org/training](http://www.ipaf.org/training)





## ABOUT THE COURSE

The IPAF Mobile Elevating Work Platform (MEWP) Operator Training Course is IPAF's longest-standing and best-known course. The content is updated regularly in line with industry developments, the latest safety guidance and incident statistics.

The qualification, represented by the IPAF Powered Access Licence (PAL) Card, is recognised worldwide as a sign of high-quality operator training. The iconic yellow PAL Card is proof of quality training and is now issued digitally via IPAF's smartphone operator app, ePAL.

The course consists of a theory section and test followed by practical training and a test.

The theory section can be taken either in-person at an IPAF Approved Training Centre, online via eLearning, or virtually, using digital meeting software, such as Zoom or Teams.

Practical training takes place at an IPAF Approved Training Centre or at pre-agreed suitable on-site facilities. It involves hands-on experience operating your chosen machine categories, under the guidance and supervision of an IPAF instructor.



## WHO SHOULD TAKE THIS COURSE?

The course is for anyone who needs to safely and effectively operate a MEWP in any machine category. (For more information, visit [www.ipaf.org/categories](http://www.ipaf.org/categories)).

Anyone who may be required to supervise or rescue an operator would also benefit from completing the course. This is an entry-level course; candidates do not need any prior experience of operating a MEWP.

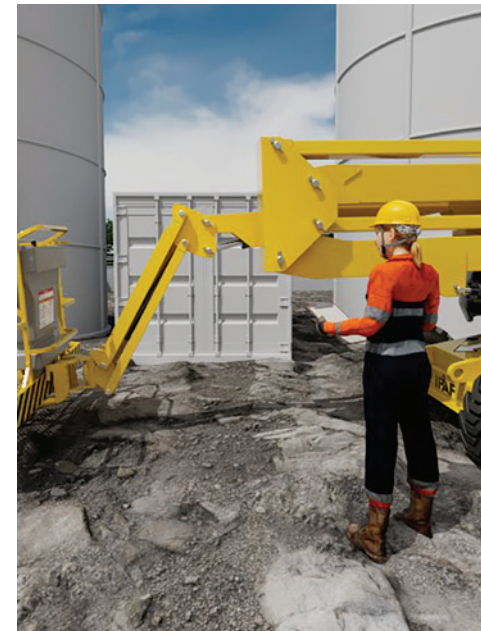
N.B. A shorter renewal course is also available for candidates who already hold a PAL Card that is about to expire and who have previously taken the IPAF MEWP Operator Course.



## WHAT WILL YOU LEARN?

You will learn how to confidently and safely operate a MEWP. The course covers:

- Pre-use checks and machine familiarisation
- Basic harness selection and pre-use checks
- Modular, category-specific training containing detailed information about the machine category features, mechanisms & controls
- Safe MEWP operations
- Work-site inspections
- Key hazards and mitigation



## HOW LONG IS THE COURSE?

The course is one to three days. Duration varies depending on the candidate's experience and the complexity of the chosen machine-specific modules. For more basic machines, it takes approximately one day and for more complex equipment, up to three days.

Candidates can generally complete two machine categories in this time, e.g. 3A and 3B. If taking the theory as eLearning, this usually takes around three hours prior to the candidate attending an IPAF Approved Training Centre for their theory test and practical training and test.

Theory training by eLearning offers flexibility as it can be completed at the candidate's convenience on their own laptop or tablet. The training can be saved and returned to, and does not need to be completed in one session, so can be completed at the candidate's own pace.

## QUALIFICATION

Successful candidates will receive a digital PAL Card, accessed via the IPAF ePAL operator app. The PAL Card is valid for five years\* and is the most-requested qualification from contractors, worksites and construction employers around the world.

*\*Duration of validity can vary, depending on the country or region in which training takes place.*





*"This advanced style of training is unique for candidates' requirements. It's a fun, interactive, dynamic way of learning which allows the candidate to engage in real life scenarios put forward by leading professionals and will help every individual improve their behavioural safety culture while operating a MEWP."*

**Chris Gilling, IPAF Instructor, UK**

*"The course offers a dynamic and interactive learning experience and achieves the high standards required and promoted by IPAF, "*

**Juan Ignacio Fernandes,  
IPAF Instructor Assessor, Uruguay**

*"The course, developed with the aim of creating machine category-specific modules, allows candidates to delve deeper into aspects relating to the machines of greatest interest to them. The course offers an attractive, engaging and modern learning experience; whether the theory is taken as eLearning or in-person, followed by practical training, the qualification provides a great contribution to improve safety in the use of MEWPs."*

**Mauro Potrich, RSPP, CTE Lift, Italy**

Have you downloaded the ePAL app? Visit the IOS or Android App Store on your smartphone and look for 'IPAF ePAL'. For more information visit [www.ipaf.org/epal](http://www.ipaf.org/epal)



For more information or to book this course, please contact an IPAF Approved Training Centre

[www.ipaf.org/training](http://www.ipaf.org/training)

