



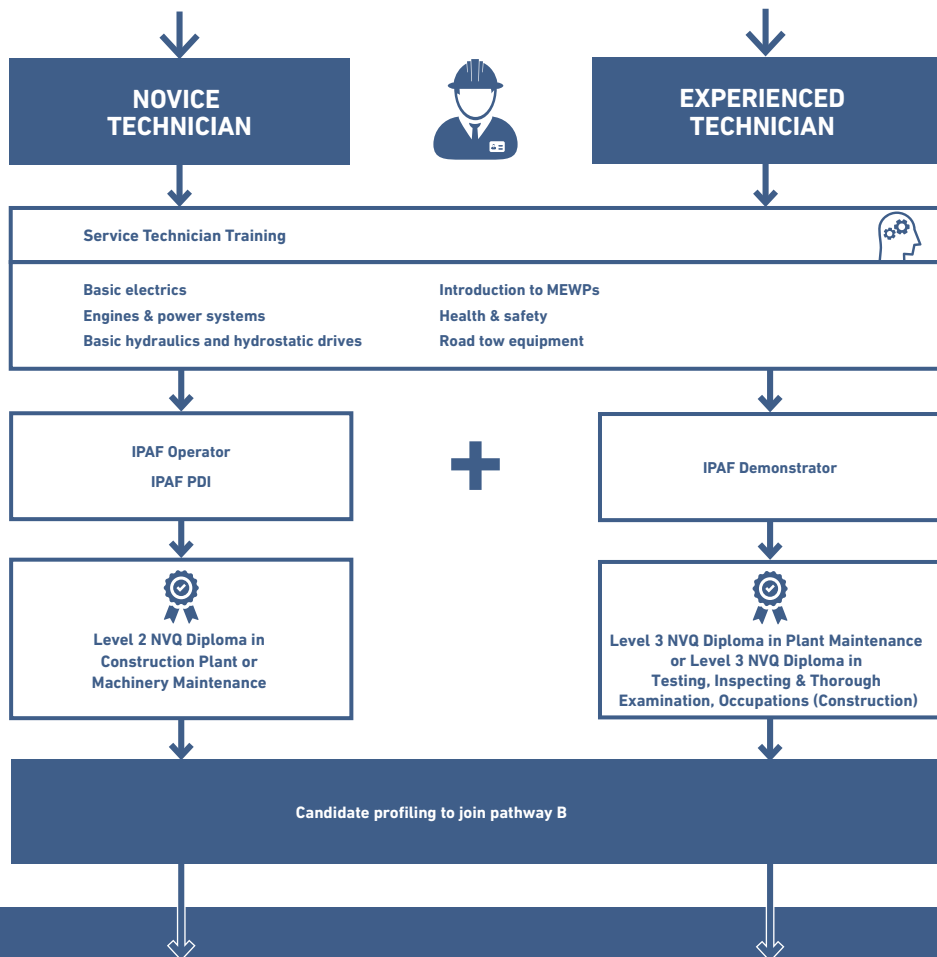
Promoting the safe and effective use of powered access

PATHWAY A

SERVICE TECHNICIAN TRAINING

The Service Technician training pathway is a great option for people who are new to powered access and hire rental, or are already working in a maintenance/servicing role, and want to complete a formal qualification.

This pathway combines a Level 2 or 3 NVQ Diploma in Construction Plant or Machinery Maintenance with exclusive IPAF training courses to become an IPAF-certified Service Technician.



IPAF-APPROVED SERVICE TECHNICIAN TRAINING COURSE



www.ipaf.org/industry-training



BOOK NOW!

2021 START DATES:

8 June & 7 September
at Horizon Platforms,
Normanton

30 November at
GT Access, Bromsgrove

Bookings & Queries

Contact: Richard Whiting
richard.whiting@ipaf.org
07928 666 012

Course delivered in
conjunction with:

LearningforHireLtd

www.ipaf.org/industry-training

MA-1080-0521-1-en-GB



ABOUT THE COURSE

The course is delivered in conjunction with IPAF Member Learning for Hire. The course content has been cross-mapped against the NVQ Diploma to ensure all mandatory units are covered.

WHO IS THE SERVICE TECHNICIAN COURSE FOR?

Complete beginners, novices, and intermediate level technicians, or anyone who simply wishes to formalise their training, and those looking to accrue points towards the IPAF Competent Assessed Person (CAP) status. Candidates do not need to hold an IPAF qualification to attend the course.

HOW LONG IS THE COURSE?

Six days. There are six modules each taking a day to complete. Modules are usually taken in paired days within three-weeks of the start date.

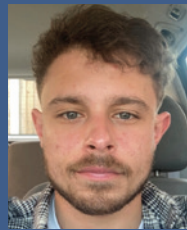
SUCCESSFUL CANDIDATES RECEIVE:

- Training only = 3 CAP points
- Training + Level 2 NVQ = 5 CAP points
- Training + Level 3 NVQ = 7 CAP points

For more information on CAP, visit: www.ipaf.org/CAP



'The service technician course was really interesting, challenging and rewarding and gave me the knowledge to progress with my NVQ because the instructor, Paul Robertson, was fantastic and patient. The training helped give me the foundation to build more knowledge on the machinery and Level 3 in Testing, Inspection and Thorough examination will help me massively as it's specific to my job role and is vital in what I need for my end game. My long term aim is to become a CAP engineer. I'd recommend the course to anyone looking to get into this line of work who has little to










no understanding because it breaks down all parts of the job in a way that's easy to understand.'

Jake Howard, Service Engineer, Speedy Powered Access & graduate of IPAF Service Tech Course

'Our range of modular training courses written specifically for the powered access industry gets "back to basics" and leads to nationally recognised Level 2 and Level 3 NVQ qualifications. Many training courses focus on what buttons to press or what process to follow which is ok for basic testing and inspection, but to be able to diagnose faults, carry-out servicing and undertake more complex repairs, requires an understanding of how things work and engineering principles, such as structural designs, electrics, engines, hydraulic systems and critically, safety and safe working principles.'

Paul Robertson, Director & Course Instructor, Learning for Hire

| SERVICE TECHNICIAN COURSE MODULES | | IPAF MEMBER COST |
|---|---|----------------------------|
|  | Module 1 – Basic Electrics and Work Equipment including basic electrical theory, equipment inspection, PAT and test equipment use | £150 |
|  | Module 2 – Engines and Power Systems - including 2 stroke, 4 stroke SI and diesel (CI) Engines – principals, fault-finding and rebuild | £150 |
|  | Module 4 – Basic Hydraulics and Hydrostatic Drive – Hydraulic principals, pumps, motors, tracked machinery and ISO Schematics | £150 |
|  | Module 5 – Powered Access PDI Essentials – Covering boom and scissor lift inspection/PDI, testing and basic fault diagnosis | £150 |
|  | Module 6 – Health and Safety – Workshop specific with CITB Health & Safety Awareness (HSA) certification | £150 |
|  | Module 8 – Road-Tow Equipment – Hire equipment trailer checks, maintenance and basic repairs e.g. Nifty 120T | £150 |
|  | Choice of Qualification NVQ Level 2 Diploma in Plant Maintenance NVQ Level 3 Diploma in Plant Maintenance NVQ Level 3 Diploma in Testing, Inspecting and Thorough Examination, Occupations (Construction) | £995 |
| <i>N.B. All qualifications are achieved through on-site assessment. We come to your workplace and assess you at work.</i> | | Total £1,895 |

COULD YOU HOST A SERVICE TECHNICIAN COURSE?

Are you an IPAF Member who has the facilities to host a Service Technician Course? If you can provide a training room and lunch for up to eight candidates you'll receive one place on the course for free as well as getting your business on the map.

For more information, contact:

Richard Whiting
richard.whiting@ipaf.org | 07928 666 012